

LG Medical Display



WHY LG Medical Display

LG offers a diverse portfolio of products, including clinical review monitors, diagnostic monitors, surgical monitors, and even digital X-ray detectors. Leveraging the outstanding display technology, LG will continue to provide medical devices meeting the needs of medical professionals.

01 CLEAR IMAGE



02 WORK EFFICIENCY

03 USER CONVENIENCE



Application Guide

Consulting Room

Clinical Review Monitor



X-ray Room

Digital X-ray Detector



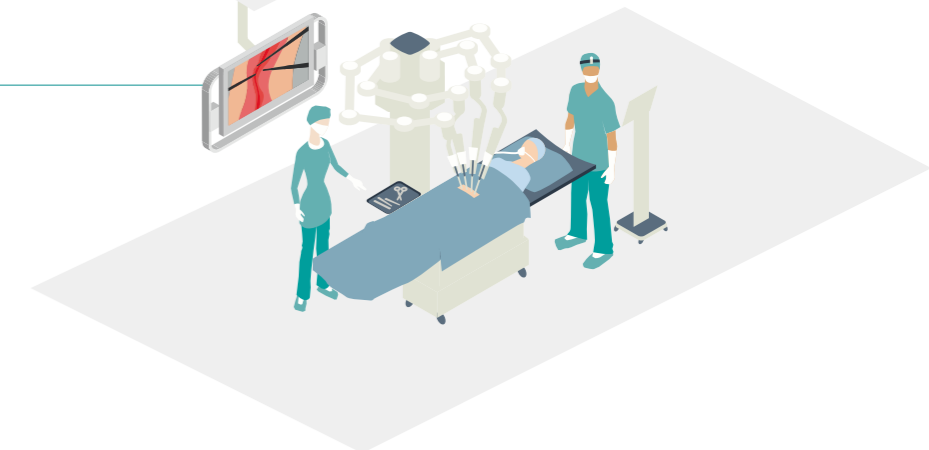
Reading Room

Clinical Review Monitor /
Diagnostic Monitor



Operating Room

Surgical Monitor



* All images are shown for illustrative purposes only and may vary from the actual product / usage.

Product Line-up

Clinical Review Monitor



27HJ712C
27-inch (16 : 9) | IPS
8MP (3,840 x 2,160)



27HJ713C
27-inch (16 : 9) | IPS
8MP (3,840 x 2,160)



24HR513C
24-inch (16 : 10) | IPS
2MP (1,920 x 1,200)

Diagnostic Monitor



31HN713D
31-inch (3 : 2) | IPS
12MP (4,200 x 2,800)



32HQ713D
31.5-inch (16 : 9) | IPS Black
8MP (3,840 x 2,160)



32HL512D
31.5-inch (16 : 9) | IPS
8MP (3,840 x 2,160)



21HQ613D
21.3-inch (4 : 5) | IPS
5MP (2,048 x 2,560)



21HQ513D
21.3-inch (3 : 4) | IPS
3MP (1,536 x 2,048)

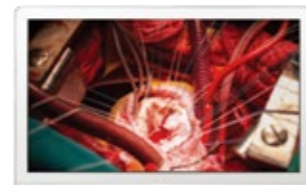
Surgical Monitor



55MH5K
55-inch (16 : 9) | IPS
4K (3,840 x 2,160)



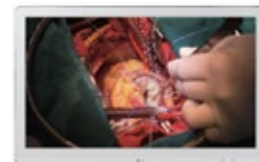
32HL714S
31.5-inch (16 : 9) | IPS
4K (3,840 x 2,160)



32HL710S
31.5-inch (16 : 9) | IPS
4K (3,840 x 2,160)



27HQ710S
27-inch (16 : 9) | VA
Mini-LED
4K (3,840 x 2,160)



27HK510S
27-inch (16 : 9) | IPS
Full HD (1,920 x 1,080)

Digital X-ray Detector

Oxide TFT



17HQ901G
Oxide TFT
Wired / Wireless



14HQ901G
Oxide TFT
Wired / Wireless

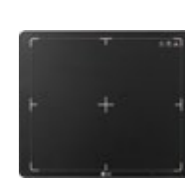
a-Si TFT



17HQ701G
a-Si TFT
Wired / Wireless



14HQ701G
a-Si TFT
Wired / Wireless



10HQ701G
a-Si TFT
Wired / Wireless



17HK700G-W
a-Si TFT
Wired



14HQ721G
a-Si TFT
Built-in AEC
Wired / Wireless

LG Medical Monitor

Clinical Review Monitor



27HJ712C



- DICOM Compliant
- HW Calibration
- Brightness (Typ.): 350 cd/m²
- Contrast Ratio (Typ.): 1,000 : 1
- Color Gamut (Typ.): sRGB over 99% (Coverage)
- 3-Side Virtually Borderless Design
- 2PBP / Dual Controller
- Tilt / Height Adjustment / Pivot (+90°)

27HJ713C



- DICOM Compliant
- HW Calibration
- Brightness (Typ.): 350 cd/m²
- Contrast Ratio (Typ.): 1,000 : 1
- Color Gamut (Typ.): sRGB over 99% (Coverage)
- 3-Side Virtually Borderless Design
- 2PBP / Dual Controller
- Tilt / Swivel / Height Adjustment / Pivot (±90°)

24HR513C



- DICOM Compliant
- HW Calibration with Internal Front Sensor
- Brightness (Typ.): 600 cd/m²
- Contrast Ratio (Typ.): 1,000 : 1
- Focus View Mode
- Pathology Mode
- Dual Controller
- Daisy Chain
- Tilt / Swivel / Height Adjustment / Auto Pivot (±90°)

Specification

		27HJ712C	27HJ713C	24HR513C
Model				
Resolution		8MP (3,840 x 2,160)	8MP (3,840 x 2,160)	2MP (1,920 x 1,200)
Inch (Aspect Ratio)		27-inch (16 : 9)	27-inch (16 : 9)	24-inch (16 : 10)
Panel	Panel Type	IPS	IPS	IPS
	Surface Treatment	Anti-glare, 3H	Anti-glare, 3H	Anti-glare
	Color Gamut (Typ.)	sRGB over 99% (Coverage)	sRGB over 99% (Coverage)	NTSC 70% (CIE1931)
	Viewing Angles (CR≥10)	178° (Right / Left), 178° (Up / Down)	178° (Right / Left), 178° (Up / Down)	178° (Right / Left), 178° (Up / Down)
	Brightness (Typ.)	350 cd/m ²	350 cd/m ²	600 cd/m ²
	Brightness (Stabilization)	250 cd/m ²	250 cd/m ²	350 cd/m ²
	Contrast Ratio (Typ.)	1,000 : 1	1,000 : 1	1,000 : 1
Response Time (GtG¹⁾)		14 ms (Off-setting), 5 ms (Faster-setting)	14 ms (Off-setting), 5 ms (Faster-setting)	5 ms (Faster-setting)
	DICOM Compliant	Yes	Yes	Yes
Feature	HW Calibration	Yes (LG Calibration Studio)	Yes (LG Calibration Studio)	Yes (LG Calibration Studio Medical)
	Picture Mode	Custom, Mono, Reader, sRGB, Color Weakness, EBU, REC709, SMPTE-C, DICOM, Calibration 1, Calibration 2	Custom, Mono, Reader, sRGB, Color Weakness, EBU, REC709, SMPTE-C, DICOM, Calibration 1, Calibration 2	Custom, Mono, Pathology, Text, DICOM, DICOM (Custom), Calibration 1, Calibration 2
	Super Resolution+	Yes	Yes	Yes
	Focus View Mode	-	-	Yes
	Video Signals	Input Terminals: HDMI x 2, DisplayPort x 1 Output Terminals: -	Input Terminals: HDMI x 2, DisplayPort x 1 Output Terminals: -	Input Terminals: HDMI x 1, DisplayPort x 1, DVI-D x 1 Output Terminals: DisplayPort x 1 (Daisy Chain, 2MP / @60 Hz)
Connectivity	USB	USB 3.0 1 Upstream, 2 Downstream	USB 3.0 1 Upstream, 2 Downstream	USB 3.0 2 Upstream, 2 Downstream
	AC Input	100 - 240 Vac, 50 / 60 Hz	100 - 240 Vac, 50 / 60 Hz	100 - 240 Vac, 50 / 60 Hz
Power	Power Consumption (Max.)	65 W	65 W	65 W
	Power Consumption (DC Off)	Less than 0.3 W	Less than 0.3 W	Less than 0.3 W
User Convenience	PBP / Dual Controller	Yes (2PBP) / Yes	Yes (2PBP) / Yes	No / Yes
	Reader Mode / Flicker Safe	Yes / Yes	Yes / Yes	Yes / Yes
	Auto Luminance Sensor	-	-	Yes
	Front Sensor (Built-in Calibration)	-	-	Yes
Physical Specifications	Weight (without Stand)	4.7 kg (10.4 lb)	4.7 kg (10.4 lb)	4.35 kg (9.5 lb)
	Weight (with Stand)	6.2 kg (13.7 lb)	7.5 kg (16.5 lb)	7.1 kg (15.6 lb)
	Borderless Design	3-Side Virtually Borderless Design	3-Side Virtually Borderless Design	-
	Adjustable Stand	Tilt: -3 ~ 20°, Pivot: +90°, Height Range: 110 mm	Tilt: -5 ~ 25°, Swivel: ±45°, Pivot: ±90° (Bi-Directional), Height Range: 150 mm	Tilt: -5° ~ 25°, Swivel: ±45°, Auto Pivot ²⁾ : ±90° (Bi-Directional), Height Range: 150 mm
	Wall Mount Size	100 x 100 mm	100 x 100 mm	100 x 100 mm

1) GtG: Gray to gray response time

2) Auto Pivot refers to the automatic screen rotation function.

* Specifications may vary by region and all features, standards, and other product specifications are subject to change without notice or obligation.

* All images are shown for illustrative purposes only and may vary from the actual product / usage.

LG Medical Monitor

Diagnostic Monitor



31HN713D



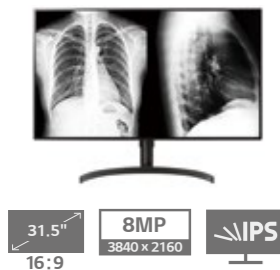
- DICOM Compliant
- HW Calibration with Internal Front Sensor
- Multi-Resolution Mode (12 / 6MP)
- Brightness (Typ.): 1,200 cd/m²
- Contrast Ratio (Typ.): 1,500 : 1
- Color Gamut (Typ.): sRGB over 97% (Coverage)
- Focus View Mode
- Pathology Mode
- 6 Hot Keys
- 2PBP / Dual Controller
- Presence Sensor
- Lighting (Down / Wall)

32HQ713D



- DICOM Compliant
- HW Calibration with Internal Front Sensor
- Multi-Resolution Mode (8 / 6 / 4MP)
- Brightness (Typ.): 1,000 cd/m²
- Contrast Ratio (Typ.): 2,000 : 1
- Color Gamut (Typ.): sRGB 100% (CIE1931)
- Focus View Mode
- Pathology Mode
- 6 Hot Keys
- 2PBP / Dual Controller
- Presence Sensor
- Lighting (Down / Wall)

32HL512D



- DICOM Compliant
- HW Calibration
- Multi-Resolution Mode (8 / 6 / 4MP)
- Brightness (Typ.): 450 cd/m²
- Contrast Ratio (Typ.): 1,300 : 1
- Color Gamut (Typ.): DCI-P3 98% (CIE1976)
- Focus View Mode
- Pathology Mode
- HDR 10
- 4-Side Virtually Borderless Design
- 2PBP / Dual Controller
- Pivot (±90°)

21HQ613D



- DICOM Compliant
- HW Calibration with Internal Front Sensor
- Multi-Resolution Mode (5 / 3 / 2MP)
- Brightness (Typ.): 1,100 cd/m²
- Contrast Ratio (Typ.): 1,800 : 1
- Color Gamut (Typ.): NTSC 72% (CIE1931)
- Focus View Mode
- Pathology Mode
- 5 Hot Keys
- Dual Controller
- Presence Sensor
- Lighting (Down / Wall)
- Auto Pivot (±90°)
- Daisy Chain

21HQ513D



- DICOM Compliant
- HW Calibration with Internal Front Sensor
- Multi-Resolution Mode (3 / 2MP)
- Brightness (Typ.): 1,100 cd/m²
- Contrast Ratio (Typ.): 1,800 : 1
- Color Gamut (Typ.): NTSC 72% (Coverage)
- Focus View Mode
- Pathology Mode
- 5 Hot Keys
- Dual Controller
- Presence Sensor
- Lighting (Down / Wall)
- Pivot (+90°)
- Daisy Chain

* All images are shown for illustrative purposes only and may vary from the actual product / usage.

Specification

	31HN713D	32HQ713D	32HL512D	21HQ613D	21HQ513D
Model					
Resolution	12MP (4,200 x 2,800)	8MP (3,840 x 2,160)	8MP (3,840 x 2,160)	5MP (2,048 x 2,560)	3MP (1,536 x 2,048)
Inch (Aspect Ratio)	31-inch (3 : 2)	31.5-inch (16 : 9)	31.5-inch (16 : 9)	21.3-inch (4 : 5)	21.3-inch (3 : 4)
Panel	Panel Type: IPS Surface Treatment: Anti-glare, 3H Color Gamut (Typ.): sRGB over 97% (Coverage) Viewing Angles (CR≥10): 178° (Right / Left), 178° (Up / Down) Brightness (Typ.): 1,200 cd/m ² Brightness (Stabilization): 550 cd/m ² Contrast Ratio (Typ.): 1,500 : 1 Response Time (GtG ¹⁾ : 14 ms (Off-setting), 5 ms (Faster-setting)	Panel Type: IPS Black Surface Treatment: Anti-glare, 3H Color Gamut (Typ.): sRGB 100% (CIE1931) Viewing Angles (CR≥10): 178° (Right / Left), 178° (Up / Down) Brightness (Typ.): 1,000 cd/m ² Brightness (Stabilization): 500 cd/m ² Contrast Ratio (Typ.): 2,000 : 1 Response Time (GtG ¹⁾ : 14 ms (GtG, Not Support OD)	Panel Type: IPS Surface Treatment: Anti-glare, 3H Color Gamut (Typ.): DCI-P3 98% (CIE1976) Viewing Angles (CR≥10): 178° (Right / Left), 178° (Up / Down) Brightness (Typ.): 450 cd/m ² Brightness (Stabilization): 250 cd/m ² (Clinical Mode Setting), 350 cd/m ² (Diagnostic Mode Setting) Contrast Ratio (Typ.): 1,300 : 1 Response Time (GtG ¹⁾ : 14 ms (Off-setting), 5 ms (Faster-setting)	Panel Type: IPS Surface Treatment: Anti Glare Color Gamut (Typ.): NTSC 72% (CIE1931) Viewing Angles (CR≥10): 178° (Right / Left), 178° (Up / Down) Brightness (Typ.): 1,100 cd/m ² Brightness (Stabilization): 600 cd/m ² Contrast Ratio (Typ.): 1,800 : 1 Response Time (GtG ¹⁾ : 5 ms (Faster-setting)	Panel Type: IPS Surface Treatment: Anti-glare, 3H Color Gamut (Typ.): NTSC 72% Viewing Angles (CR≥10): 178° (Right / Left), 178° (Up / Down) Brightness (Typ.): 1,100 cd/m ² Brightness (Stabilization): 500 cd/m ² Contrast Ratio (Typ.): 1,800 : 1 Response Time (GtG ¹⁾ : 5 ms (Faster-setting)
DICOM Compliant	Yes	Yes	Yes	Yes	Yes
HW Calibration	Yes (LG Calibration Studio Medical)	Yes (LG Calibration Studio Medical)	Yes (LG Calibration Studio Medical)	Yes (LG Calibration Studio Medical)	Yes (LG Calibration Studio Medical)
Feature	Picture Mode: Custom, Mono, Pathology, Text, DICOM, Calibration 1, Calibration 2 Super Resolution+ Multi Resolution Mode: Yes (12MP / 6MP) Focus View Mode: Yes Light Box Mode: Yes	Picture Mode: Custom, Mono, Pathology, Text, DICOM, Calibration 1, Calibration 2 Super Resolution+ Multi Resolution Mode: Yes (8MP / 6MP / 4MP) Focus View Mode: Yes Light Box Mode: Yes	Picture Mode: Custom, Mono, Pathology, Reader, Vivid, HDR Effect, DICOM (Clinical), DICOM (Diagnostic), Calibration 1, Calibration 2 Super Resolution+ Multi Resolution Mode: Yes (8MP / 6MP / 4MP) Focus View Mode: Yes Light Box Mode: No	Picture Mode: Custom, Mono, Pathology, Text, DICOM, DICOM (Custom), Calibration 1, Calibration 2 Super Resolution+ Multi Resolution Mode: Yes (5MP / 3MP / 2MP) Focus View Mode: Yes Light Box Mode: Yes	Picture Mode: Custom, Mono, Pathology, Text, DICOM, DICOM (Custom), Calibration 1, Calibration 2 Super Resolution+ Multi Resolution Mode: Yes (3MP / 2MP) Focus View Mode: Yes Light Box Mode: Yes
Video Signals	Input Terminals: DisplayPort x 2 Output Terminals: -	Input Terminals: DisplayPort x 2 Output Terminals: -	Input Terminals: HDMI x 1, DisplayPort x 2 Output Terminals: -	Input Terminals: DisplayPort x 2, DVI-D (Dual Link) x 1 Output Terminals: DisplayPort x 1 (Daisy Chain, 5MP / @48 Hz)	Input Terminals: DisplayPort x 2, DVI x 1 Output Terminals: DisplayPort x 1 (Daisy Chain, 3MP / @60 Hz)
Connectivity	USB: USB 3.0 1 Upstream, 3 Downstream	USB: USB 3.0 2 Upstream, 2 Downstream	USB: USB 2.0 1 Upstream, 2 Downstream	USB: USB 3.0 2 Upstream, 2 Downstream	USB: USB 3.0 2 Upstream, 2 Downstream
Power	AC Input: 100 - 240 Vac, 50 / 60 Hz Power Consumption (Max.): 180 W Power Consumption (DC Off): Less than 0.3 W	AC Input: 100 - 240 Vac, 50 / 60 Hz Power Consumption (Max.): 120 W Power Consumption (DC Off): Less than 0.3 W	AC Input: 100 - 240 Vac, 50 / 60 Hz Power Consumption (Max.): 65 W Power Consumption (DC Off): Less than 0.3 W	AC Input: 100 - 240 Vac, 50 / 60 Hz Power Consumption (Max.): 65 W Power Consumption (DC Off): Less than 0.3 W	AC Input: 100 - 240 Vac, 50 / 60 Hz Power Consumption (Max.): 120 W Power Consumption (DC Off): Less than 0.3 W
User Convenience	PBP / Dual controller: Yes (2PBP) / Yes Reader Mode / Flicker Safe: Yes (Text Mode) / Yes Lighting: Yes (Down / Wall) Presence Sensor: Yes Auto Luminance Sensor: Yes Front Sensor (Built-in Calibration): Yes	PBP / Dual controller: Yes (2PBP) / Yes Reader Mode / Flicker Safe: Yes / Yes Lighting: Yes (Down / Wall) Presence Sensor: Yes Auto Luminance Sensor: Yes Front Sensor (Built-in Calibration): Yes	PBP / Dual controller: Yes (2PBP) / Yes Reader Mode / Flicker Safe: Yes / Yes Lighting: No Presence Sensor: No Auto Luminance Sensor: No Front Sensor (Built-in Calibration): No	PBP / Dual controller: No / Yes Reader Mode / Flicker Safe: Yes (Text Mode) / Yes Lighting: Yes (Down / Wall) Presence Sensor: Yes Auto Luminance Sensor: Yes Front Sensor (Built-in Calibration): Yes	PBP / Dual controller: No / Yes Reader Mode / Flicker Safe: Yes (Text Mode) / Yes Lighting: Yes (Down / Wall) Presence Sensor: Yes Auto Luminance Sensor: Yes Front Sensor (Built-in Calibration): Yes
Physical Specifications	Weight (without Stand): 10.7 kg (23.6 lb) Weight (with Stand): 14.0 kg (30.9 lb) Borderless Design: Normal	Weight (without Stand): 9.7 kg (21.4 lb) Weight (with Stand): 13.0 kg (28.6 lb) Borderless Design: Normal	Weight (without Stand): 5.6 kg (12.4 lb) Weight (with Stand): 7.0 kg (15.4 lb) Borderless Design: 4-Side Virtually Borderless Design	Weight (without Stand): 5.45 kg (12.0 lb) Weight (with Stand): 7.85 kg (17.3 lb) Borderless Design: Normal	Weight (without Stand): 5.0 kg (11.1 lb) Weight (with Stand): 7.0 kg (15.4 lb) Borderless Design: Normal
	Adjustable Stand: Tilt: -5° - 15°, Swivel: ±15°, Height Range: 110 mm	Adjustable Stand: Tilt: -5° - 15°, Swivel: ±15°, Height Range: 110 mm	Adjustable Stand: Tilt: -5° - 20°, Pivot: ±90° (Bi-Directional), Height Range: 110 mm	Adjustable Stand: Tilt: -5° - 20°, Swivel: ±15°, Auto Pivot ²⁾ : ±90° (Bi-Directional), Height Range: 110 mm	Adjustable Stand: Tilt: -5° - 20°, Pivot: +90°, Height Range: 110 mm
	Wall Mount Size: 100 x 100 mm	Wall Mount Size: 100 x 100 mm	Wall Mount Size: 100 x 100 mm	Wall Mount Size: 100 x 100 mm	Wall Mount Size: 100 x 100 mm

1) GtG: Gray to gray response time

2) Auto Pivot refers to the automatic screen rotation function.

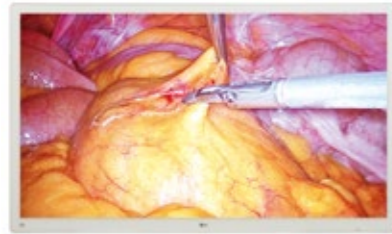
* Specifications may vary by region and all features, standards, and other product specifications are subject to change without notice or obligation.

LG Medical Monitor

Surgical Monitor



55MH5K



- 12G-SDI Support
- HDR 10 Support
- Brightness (Typ.): 680 cd/m²
- Contrast Ratio (Typ.): 1,100 : 1
- Color Gamut (Typ.): DCI-P3 86% (CIE1976)
- Failover Input Switch
- Mirror & Rotation Mode
- 2 / 3 / 4PBP, PIP
- IP45 (Front), IP32 (Except for Front), IK06

32HL714S



- 12G-SDI Support
- HDR 10 Support
- Brightness (Typ.): 800 cd/m²
- Contrast Ratio (Typ.): 1,000 : 1
- Color Gamut (Typ.): sRGB over 99% (Coverage)
- Failover Input Switch
- Mirror & Rotation Mode
- 2 / 3 / 4PBP, PIP
- IP35 (Front), IP32 (Except for Front), IK06

32HL710S



- 3G-SDI Support
- HDR 10 Support
- Brightness (Typ.): 800 cd/m²
- Contrast Ratio (Typ.): 1,000 : 1
- Color Gamut (Typ.): sRGB over 99% (Coverage)
- Failover Input Switch
- Mirror & Rotation Mode
- 2 / 3 / 4PBP, PIP
- IP35 (Front), IP32 (Except for Front), IK06

27HQ710S



- 3G-SDI Support
- HDR 10 Support
- Brightness (Typ.): 800 cd/m²
- Contrast Ratio (Typ.): 1,000 : 1
- Color Gamut (Typ.): DCI-P3 98% (Coverage)
- Failover Input Switch
- Mirror & Rotation Mode
- 2 / 3 / 4PBP, PIP
- IP45 (Front), IP32 (Except for Front), IK06

27HK510S



- 3G-SDI Support
- Brightness (Typ.): 1,000 cd/m²
- Contrast Ratio (Typ.): 1,000 : 1
- Color Gamut (Typ.): sRGB over 99% (Coverage)
- Failover Input Switch
- 2PBP, PIP
- IP35 (Front), IP32 (Except for Front), IK06

Specification

	55MH5K	32HL714S	32HL710S	27HQ710S	27HK510S
Model					
Resolution	4K (3,840 x 2,160)	4K (3,840 x 2,160)	4K (3,840 x 2,160)	4K (3,840 x 2,160)	Full HD (1,920 x 1,080)
Inch (Aspect Ratio)	55-inch (16 : 9)	31.5-inch (16 : 9)	31.5-inch (16 : 9)	27-inch (16 : 9)	27-inch (16 : 9)
Panel	Panel Type: IPS Color Gamut (Typ.): DCI-P3 86% (CIE1976) Viewing Angles (CR≥10): 178° (Right / Left), 178° (Up / Down) Brightness (Typ.): 680 cd/m ² Brightness (Stabilization): 400 cd/m ² (DICOM: 400 cd/m ²) Surface Treatment: Protection Glass (3.1t, Anti-reflection, Anti-fingerprint) Contrast Ratio (Typ.): 1,100 : 1 Response Time (GtG ¹⁾): 9 ms (Off-setting), 5 ms (Faster-setting)	Panel Type: IPS Color Gamut (Typ.): sRGB 115% (Area), sRGB over 99% (Coverage) Viewing Angles (CR≥10): 178° (Right / Left), 178° (Up / Down) Brightness (Typ.): 800 cd/m ² Brightness (Stabilization): 500 cd/m ² Surface Treatment: Protection Glass (1.6t, Anti-reflection, Anti-fingerprint) Contrast Ratio (Typ.): 1,000 : 1 Response Time (GtG ¹⁾): 14 ms (Off-setting), 5 ms (Faster-setting)	Panel Type: IPS Color Gamut (Typ.): sRGB 115% (Area), sRGB over 99% (Coverage) Viewing Angles (CR≥10): 178° (Right / Left), 178° (Up / Down) Brightness (Typ.): 800 cd/m ² Brightness (Stabilization): 500 cd/m ² Surface Treatment: Protection Glass (1.6t, Anti-reflection, Anti-fingerprint) Contrast Ratio (Typ.): 1,000 : 1 Response Time (GtG ¹⁾): 14 ms (Off-setting), 5 ms (Faster-setting)	Panel Type: VA Color Gamut (Typ.): DCI-P3 110.9% (Area), DCI-P3 98% (Coverage) Viewing Angles (CR≥10): 178° (Right / Left), 178° (Up / Down) Brightness (Typ.): 800 cd/m ² Brightness (Stabilization): 500 cd/m ² Surface Treatment: Protection Glass (1.3t, Anti-reflection, Anti-fingerprint, Optical bonding) Contrast Ratio (Typ.): 1,000 : 1 Response Time (GtG ¹⁾): 5 ms (Faster-setting)	Panel Type: IPS Color Gamut (Typ.): sRGB 115% (Area), sRGB over 99% (Coverage) Viewing Angles (CR≥10): 178° (Right / Left), 178° (Up / Down) Brightness (Typ.): 1,000 cd/m ² Brightness (Stabilization): 600 cd/m ² Surface Treatment: Protection Glass (1.6t, Anti-reflection, Anti-fingerprint) Contrast Ratio (Typ.): 1,000 : 1 Response Time (GtG ¹⁾): 14 ms (Off-setting), 5 ms (Faster-setting)
Feature	DICOM Compliant: Yes HW Calibration: Yes (LG Calibration Studio) HDR: HDR 10, HDR Effect	DICOM Compliant: Yes HW Calibration: Yes (LG Calibration Studio) HDR: HDR 10, HDR Effect	DICOM Compliant: Yes HW Calibration: Yes (LG Calibration Studio) HDR: HDR 10, HDR Effect	DICOM Compliant: Yes HW Calibration: Yes (LG Calibration Studio) HDR: HDR 10, HDR Effect	DICOM Compliant: Yes HW Calibration: Yes (LG Calibration Studio) HDR: No
Video Signals	Input Terminals: HDMI x 1, DisplayPort x 1, DVI-D x 1, SDI (12G / 3G) x 4, SFP x 1 Output Terminals: DisplayPort x 1, DVI-D x 1, SDI (12G / 3G) x 4	Input Terminals: HDMI x 1, DisplayPort x 1, DVI x 1, SDI (12G / 3G) x 4, SFP x 1 Output Terminals: DisplayPort x 1, DVI x 1, SDI (12G / 3G) x 4	Input Terminals: HDMI x 1, DisplayPort x 1, DVI x 1, 3G-SDI x 1 Output Terminals: DisplayPort x 1, DVI x 1, 3G-SDI x 1	Input Terminals: HDMI x 1, DisplayPort x 1, 3G-SDI x 1, DVI-D x 1 Output Terminals: DisplayPort x 1, DVI-D x 1, 3G-SDI x 1	Input Terminals: HDMI x 1, 3G-SDI x 1, DVI-D x 1, D-sub x 1 Output Terminals: DVI-D x 1, 3G-SDI x 1
Connectivity	USB: USB 3.0 1 Upstream, 1 Downstream	USB: USB 2.0 1 Upstream, 1 Downstream	USB: USB 2.0 1 Upstream, 1 Downstream	USB: USB 3.0 1 Upstream, 1 Downstream	USB: USB 3.0 1 Upstream, 1 Downstream
Power	AC Input: 100 - 240 Vac, 50 / 60 Hz Power Consumption (Max.): 180 W Power Consumption (DC Off): Less than 0.3 W	AC Input: 100 - 240 Vac, 50 / 60 Hz Power Consumption (Max.): 180 W Power Consumption (DC Off): Less than 0.3 W	AC Input: 100 - 240 Vac, 50 / 60 Hz Power Consumption (Max.): 120 W Power Consumption (DC Off): Less than 0.3 W	AC Input: 100 - 240 Vac, 50 / 60 Hz Power Consumption (Max.): 120 W Power Consumption (DC Off): Less than 0.3 W	AC Input: 100 - 240 Vac, 50 / 60 Hz Power Consumption (Max.): 120 W Power Consumption (DC Off): Less than 0.3 W
Resistance Rating²⁾	IP45 ³⁾ (Front), IP32 ⁴⁾ (Except for Front), IK06 ⁵⁾	IP35 ⁶⁾ (Front), IP32 ⁴⁾ (Except for Front), IK06 ⁵⁾	IP35 ⁶⁾ (Front), IP32 ⁴⁾ (Except for Front), IK06 ⁵⁾	IP45 ³⁾ (Front), IP32 ⁴⁾ (Except for Front), IK06 ⁵⁾	IP35 ⁶⁾ (Front), IP32 ⁴⁾ (Except for Front), IK06 ⁵⁾
User Convenience	PBP / PIP: Yes (2 / 3 / 4PBP) / Yes Screen Filp: Mirror Mode & Rotation Mode Failover Input Switch: Yes	PBP / PIP: Yes (2 / 3 / 4PBP) / Yes Screen Filp: Mirror Mode & Rotation Mode Failover Input Switch: Yes	PBP / PIP: Yes (2 / 3 / 4PBP) / Yes Screen Filp: Mirror Mode & Rotation Mode Failover Input Switch: Yes	PBP / PIP: Yes (2 / 3 / 4PBP) / Yes Screen Filp: Mirror Mode & Rotation Mode Failover Input Switch: Yes	PBP / PIP: Yes (2PBP) / Yes Screen Filp: No Failover Input Switch: Yes
Physical Specifications	Weight: 34.8 kg (76.7 lb) Wall Mount Size: 200 x 200 mm / 300 x 300 mm	Weight: 13.5 kg (29.8 lb) Wall Mount Size: 200 x 100 mm / 100 x 100 mm	Weight: 12.4 kg (27.3 lb) Wall Mount Size: 200 x 100 mm / 100 x 100 mm	Weight: 8 kg (18 lb) Wall Mount Size: 200 x 100 mm / 100 x 100 mm	Weight: 7.7 kg (17 lb) Wall Mount Size: 200 x 100 mm / 100 x 100 mm

1) GtG: Gray to gray response time

2) Tested under controlled laboratory conditions with an IP / IK rating. Dry before using. Do not charge while wet.

3) IP45: Protected against solid foreign objects of 1.0 mm Ø and greater / Protected against access to hazardous parts with a wire / Protected against water jets.

4) IP32: Protected against solid foreign objects of 2.5 mm Ø and greater / Protected against access to hazardous parts with a tool / Protected against vertically falling water drops when enclosure tilted up to 15°.

5) IK06: Protected against 1 joule impact.

6) IP35: Protected against solid foreign objects of 2.5 mm Ø and greater / Protected against access to hazardous parts with a tool / Protected against water jets.

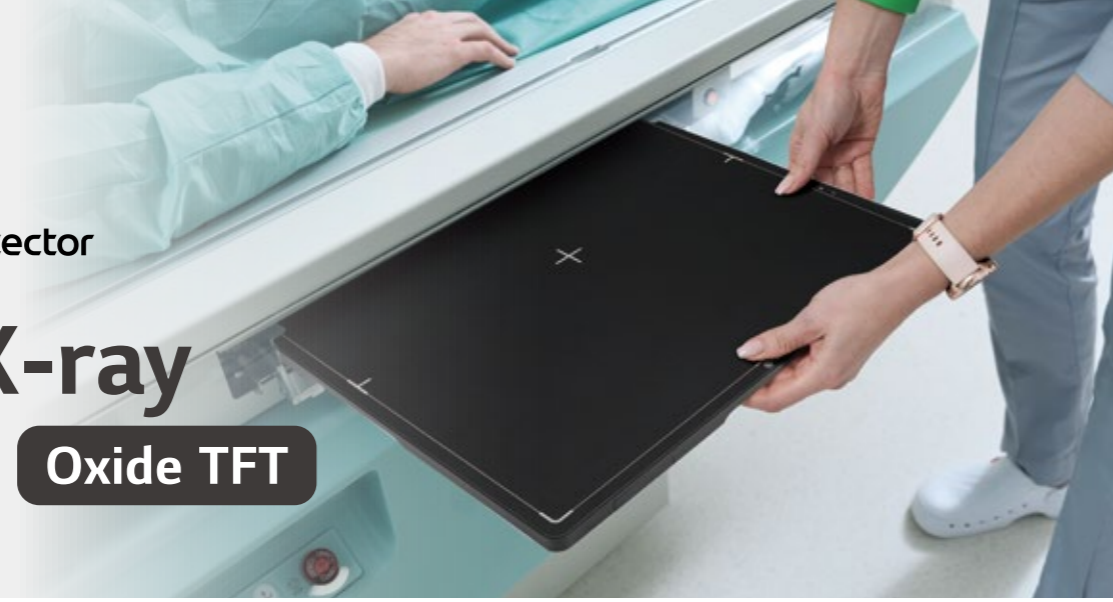
* Specifications may vary by region and all features, standards, and other product specifications are subject to change without notice or obligation.

* All images are shown for illustrative purposes only and may vary from the actual product / usage.

LG Digital X-ray Detector

Digital X-ray Detector

Oxide TFT



17HQ901G



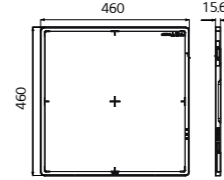
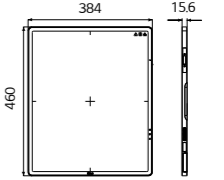
- Oxide TFT
- 140 μm pixel size
- 16 bit A/D conversion
- Raw Image in 2 s (Wireless) & 1.5 s (Wired)
- IP68

14HQ901G



- Oxide TFT
- 140 μm pixel size
- 16 bit A/D conversion
- Raw Image in 2 s (Wireless) & 1.5 s (Wired)
- IP68

Specification

	17HQ901G (17 x 17-inch)	14HQ901G (14 x 17-inch)	
Model			
Dimension / Weight (Including Battery)	460 mm x 460 mm x 15.6 mm 3.6 kg (8 lb)	384 mm x 460 mm x 15.6 mm 3.0 kg (6.6 lb)	
Intended Use	General Radiography	General Radiography	
TFT Type	Oxide	Oxide	
Scintillator	CsI	CsI	
Pixel Pitch	140 μm	140 μm	
Image Area	Number of Pixels	3,072 x 3,072 pixels	3,072 x 2,560 pixels
	TFT Active Area	430.08 x 430.08 mm	358.40 x 430.08 mm
MTF	MTF @ 0.5lp/mm (Typ.)	84%	84%
A/D Conversion	16 bit	16 bit	
Data Output	16 bit	16 bit	
Communication	Type	Wired / Wireless	Wired / Wireless
	WLAN	IEEE802.11a/b/g/n/ac, 2.4 GHz / 5 GHz	IEEE802.11a/b/g/n/ac, 2.4 GHz / 5 GHz
	Auto Exposure Detection	Yes	Yes
Cycle Time	4.5 sec (Wired) / 5 sec (Wireless)	4.5 sec (Wired) / 5 sec (Wireless)	
Full Image Transfer (Typ.) (without Window Time)	1.5 sec (Wired) / 2 sec (Wireless)	1.5 sec (Wired) / 2 sec (Wireless)	
Durability	Maximum Load Weight	Full (Uniform Load): 400 kg (881.8 lb) Local (Point Load): 200 kg (440.9 lb)	Full (Uniform Load): 400 kg (881.8 lb) Local (Point Load): 200 kg (440.9 lb)
	IP Rating	IP68 ¹⁾	IP68 ¹⁾
	Drop (IEC60601-1 Test Condition)	1.5 m	1.5 m
	Sensor Protection Plate	Carbon Fiber Plate	Carbon Fiber Plate
Battery	Operation Time	300 shots / 7.5 hrs (Typ.) (Condition: Cycle time 90 sec)	320 shots / 8.0 hrs (Typ.) (Condition: Cycle Time 90 sec)
	Charging Time	3 hrs (Typ.)	3 hrs (Typ.)
	Hot Swap	Yes (1 Min)	Yes (1 Min)
Accessories	Cable	Power Cord, Main Cable 7 m (LAN Cable, Sync Cable Option)	Power Cord, Main Cable 7 m (LAN Cable, Sync Cable Option)
		Battery Charger	Battery Charger
	Other	2 x Battery Packs Control Box	2 x Battery Packs Control Box

* All images are shown for illustrative purposes only and may vary from the actual product / usage.

1) IP68: Dust-tight / Protected against access to hazardous parts with a wire / Protected against the effects of continuous immersion in water.
* Specifications may vary by region and all features, standards, and other product specifications are subject to change without notice or obligation.

LG Digital X-ray Detector

Digital X-ray Detector

a-Si TFT

17HQ701G



- a-Si TFT
- 140 μm pixel size
- 16 bit A/D conversion
- Raw Image in 2.5 s (Wireless) & 1.5 s (Wired)
- IP68

14HQ701G



- a-Si TFT
- 140 μm pixel size
- 16 bit A/D conversion
- Raw Image in 2 s (Wireless) & 1.5 s (Wired)
- IP68

10HQ701G



- a-Si TFT
- 140 μm pixel size
- 16 bit A/D conversion
- Raw Image in 2 s (Wireless) & 1.5 s (Wired)
- IP68

17HK700G-W



- a-Si TFT
- 140 μm pixel size
- 16 bit A/D conversion
- 2 s (Wired)
- IP53

14HQ721G



- a-Si TFT
- Built-in AEC
- 140 μm pixel size
- 16 bit A/D conversion
- Raw Image in 2 s (Wireless) & 1.5 s (Wired)
- IP68

Specification

	17HQ701G (17 x 17-inch)	14HQ701G (14 x 17-inch)	10HQ701G (10 x 12-inch)	17HK700G-W (17 x 17-inch)	14HQ721G (14 x 17-inch)	
Model						
Dimension / Weight (Including Battery)	460 mm x 460 mm x 15.6 mm 3.7 kg (8.2 lb)	384 mm x 460 mm x 15.6 mm 3.2 kg (7.1 lb)	282 mm x 333 mm x 15.6 mm 1.9 kg (4.2 lb)	460 mm x 460 mm x 15.6 mm 3.4 kg (7.5 lb)	384 mm x 460 mm x 15.6 mm 3.2 kg (7.1 lb)	
Intended Use	General Radiography	General Radiography	General Radiography	General Radiography	General Radiography	
TFT Type	a-Si	a-Si	a-Si	a-Si	a-Si	
Scintillator	CsI	CsI	CsI	CsI	CsI	
Pixel Pitch	140 μm	140 μm	140 μm	140 μm	140 μm	
Image Area	Number of Pixels	3,072 x 3,072 pixels	2,500 x 3,052 pixels	2,048 x 1,792 pixels	3,072 x 3,072 pixels	2,500 x 3,052 pixels
	TFT Active Area	430.08 x 430.08 mm	350.0 x 427.28 mm	286.72 x 250.88 mm	430.08 x 430.08 mm	350.0 x 427.28 mm
MTF	MTF @ 0.5lp/mm (Typ.)	84%	84%	84%	89%	84%
A/D Conversion	16 bit	16 bit	16 bit	16 bit	16 bit	
Data Output	16 bit	16 bit	16 bit	16 bit	16 bit	
Communication	Type	Wired / Wireless	Wired / Wireless	Wired / Wireless	Wired	Wired / Wireless
	WLAN	IEEE802.11a/b/g/n/ac, 2.4 GHz / 5 GHz	IEEE802.11a/b/g/n/ac, 2.4 GHz / 5 GHz	IEEE802.11a/b/g/n/ac, 2.4 GHz / 5 GHz	N/A	IEEE802.11a/b/g/n/ac, 2.4 GHz / 5 GHz
	Auto Exposure Detection	Yes	Yes	Yes	Yes	Yes
Cycle Time	4.5 sec (Wired) / 5 sec (Wireless)	4.5 sec (Wired) / 5 sec (Wireless)	4.5 sec (Wired) / 5 sec (Wireless)	8 sec (Wired)	4.5 sec (Wired) / 5 sec (Wireless)	
Full Image Transfer (Typ.) (without Window Time)	1.5 sec (Wired) / 2.5 sec (Wireless)	1.5 sec (Wired) / 2.5 sec (Wireless)	1.5 sec (Wired) / 2.5 sec (Wireless)	2 sec (Wired)	1.5 sec (Wired) / 2.5 sec (Wireless)	
Durability	Maximum Load Weight	Full (Uniform Load): 400 kg (881.8 lb) Local (Point Load): 200 kg (440.9 lb)	Full (Uniform Load): 400 kg (881.8 lb) Local (Point Load): 200 kg (440.9 lb)	Full (Uniform Load): 400 kg (881.8 lb) Local (Point Load): 200 kg (440.9 lb)	Full (Uniform Load): 300 kg (661.3 lb) Local (Point Load): 100 kg (220.4 lb)	Full (Uniform Load): 400 kg (881.8 lb) Local (Point Load): 200 kg (440.9 lb)
	IP rating	IP68 ¹⁾	IP68 ¹⁾	IP68 ¹⁾	IP53 ²⁾	IP68 ¹⁾
	Drop (IEC60601-1 Test Condition)	1.5 m	1.5 m	1.5 m	1.0 m	1.5 m
Battery	Sensor Protection Plate	Carbon Fiber Plate	Carbon Fiber Plate	Carbon Fiber Plate	Carbon Fiber Plate	Carbon Fiber Plate
	Operation Time	300 shots / 7.5 hrs (Typ.) (Condition: Cycle Time 90 sec)	300 shots / 7.5 hrs (Typ.) (Condition: Cycle Time 90 sec)	300 shots / 7.5 hrs (Typ.) (Condition: Cycle Time 90 sec)	-	300 shots / 7.5 hrs (Typ.) (Condition: Cycle Time 90 sec)
	Charging Time	3 hrs (Typ.)	3 hrs (Typ.)	3 hrs (Typ.)	N/A	3 hrs (Typ.)
Hot Swap	Yes (1 Min)	Yes (1 Min)	Yes (1 Min)	N/A	Yes (1 Min)	
Accessories	Cable	Power Cord, Main Cable 7 m (LAN Cable, Sync Cable Option)	Power Cord, Main Cable 7 m (LAN Cable, Sync Cable Option)	Power Cord, Main Cable 7 m (LAN Cable, Sync Cable Option)	Power Cord, Main Cable 7 m (LAN Cable, Sync Cable Option)	Power Cord, Main Cable 7 m (LAN Cable, Sync Cable Option)
	Other	Battery Charger 2 x Battery Packs	Battery Charger 2 x Battery Packs	Battery Charger 2 x Battery Packs	N/A N/A	Battery Charger 2 x Battery Packs
Built-in AEC (Auto Exposure Control)	X	X	X	X	O	

1) IP68: Dust-tight / Protected against access to hazardous parts with a wire / Protected against the effects of continuous immersion in water.

2) IP53: Dust-protected / Protected against access to hazardous parts with a wire / Protected against spraying water.

* Specifications may vary by region and all features, standards, and other product specifications are subject to change without notice or obligation.

* All images are shown for illustrative purposes only and may vary from the actual product / usage.